

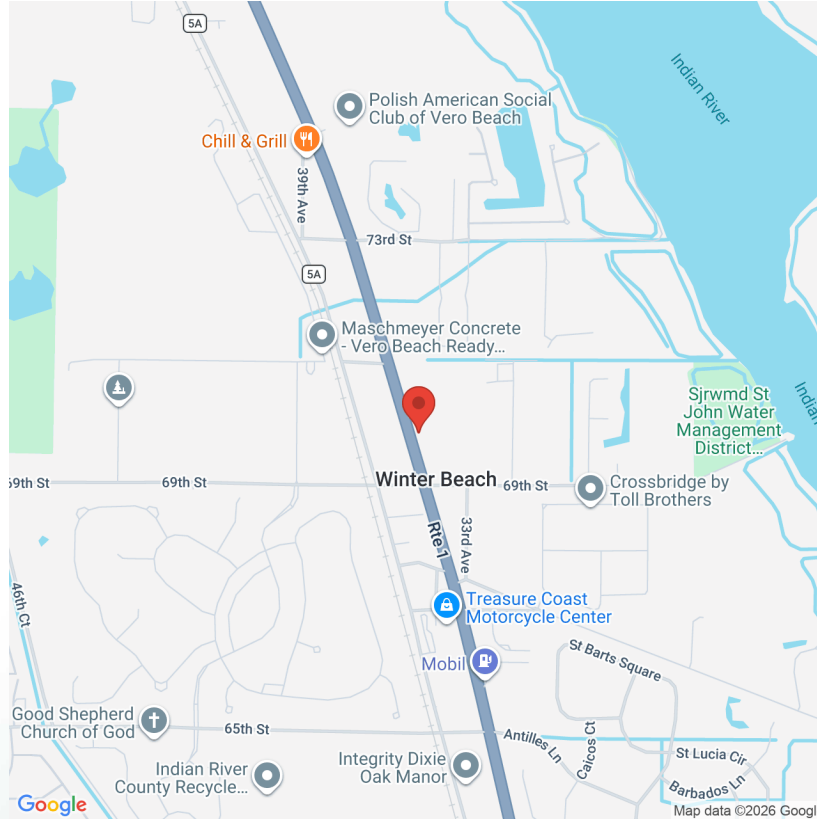
## 20.43 ACRES ON US HWY 1

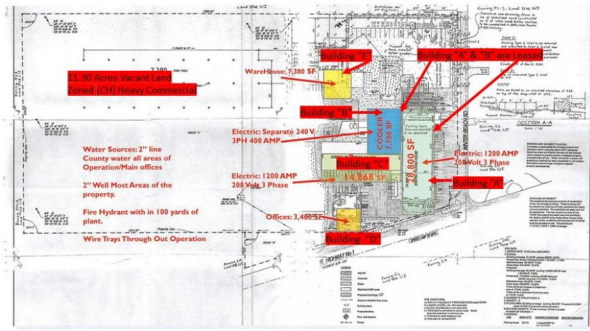


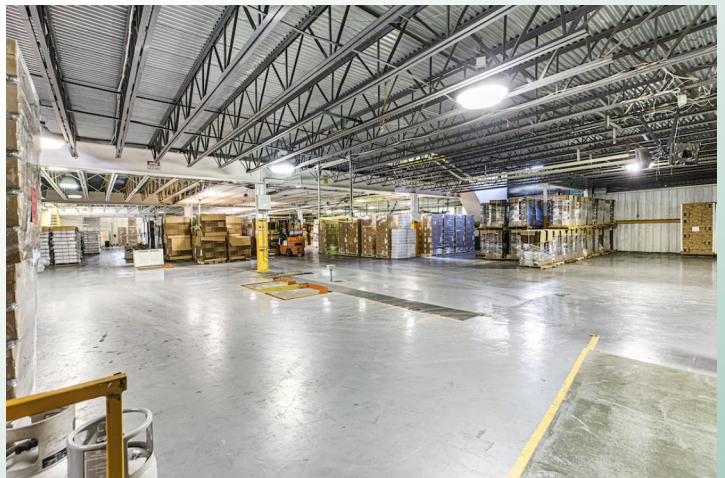
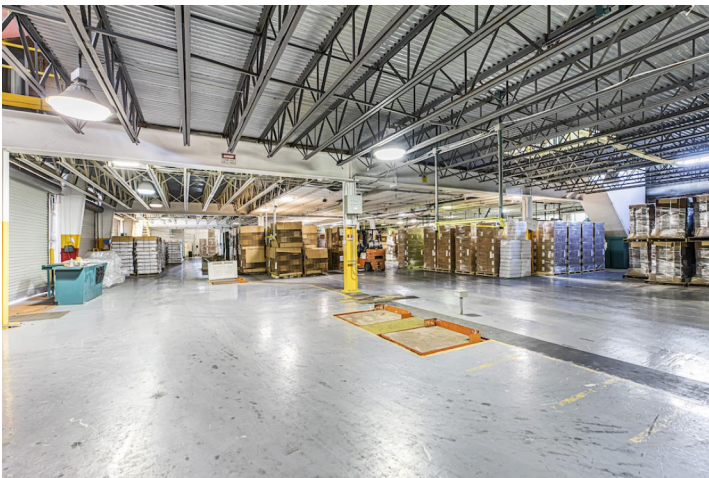
6920 US HWY 1  
VERO BEACH, FL 32967

Disclaimer: This information contained in the following Marketing Brochure is proprietary and strictly confidential. It is intended to be reviewed only by the party receiving it from Mills Commercial Real Estate Group, LLC and should not be made available to any other person or entity without the express written consent of Mills Commercial Real Estate Group, LLC. The Marketing Brochure has been prepared to provide summary, unverified information to prospective purchasers, and to establish only a preliminary level of interest in the subject property. The information contained herein is not a substitute for a thorough due diligence investigation. Mills Commercial Real Estate Group, LLC has not made any investigation, and makes no warranty or representation, with respect to the income or expenses for the property, the future projected financial performance of the property, the size and square footage of the property and improvements, the presence or absence of contaminating substances, PCB's or asbestos, the compliance with State and Federal regulations, the physical condition of the improvements thereon, or the financial conditions of any tenant, or any tenant's plans or intentions to continue its occupancy of the subject property. The information contained in this Marketing Brochure has been obtained from sources we believe to be reliable; however, Mills Commercial Real Estate Group, LLC has not verified, and will not verify, any of the information contained herein, nor has Mills Commercial Real Estate Group, LLC conducted any investigation regarding these matters and makes no warranty or representation whatsoever regarding the accuracy or completeness of the information provide. All potential buyers must take appropriate measures to verify all of the information set forth herein.

- TRAFFIC CAR COUNT IS 30,000 TRIPS PER DAY.











<b>Status:</b>	Sold
<b>Type:</b>	Commercial - For Lease
<b>Square Footage:</b>	64,221
<b>Lot Size:</b>	20.43
<b>Ceiling Heights:</b>	30'
<b>Type of Electric:</b>	FPL
<b>Zoning Type:</b>	(CH) Heavy Commercial
<b>Parking Space:</b>	36
<b>Construction:</b>	Block/Stucco
<b>Year Built:</b>	1974
<b>Traffic Volume:</b>	30,000
<b>Traffic Volume Year:</b>	2020

20.43 ACRES ZONED COMMERCIAL. THE SITE LAND AREA IS 9.13 ACRES WITH 11.30 ACRES OF VACANT LAND THIS PROPERTY CONSISTS OF SEVERAL BUILDINGS. THE SITE IS AT THE CORNER OF US HWY #1 AND 69TH STREET WITH A TRAFFIC LIGHT.

Buildings for Lease:

Building "C" 14,868 SF

Building "D" 3,400 SF

Building "E" 7,380 SF

CALL FOR LEASING INFORMATION